

SR2500 Table Construction

Top Assembly:

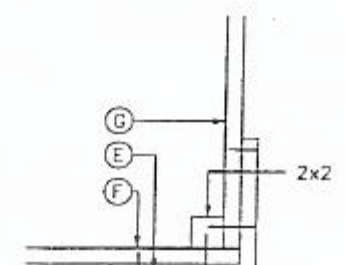
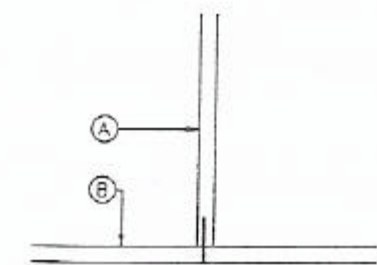
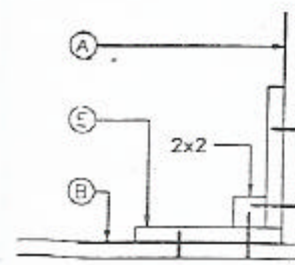
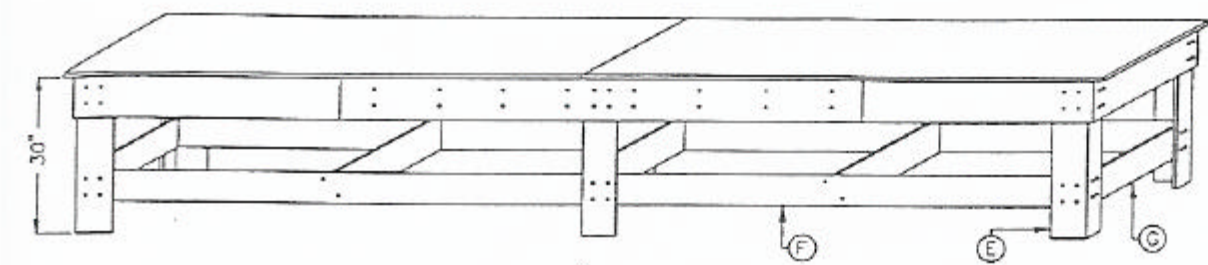
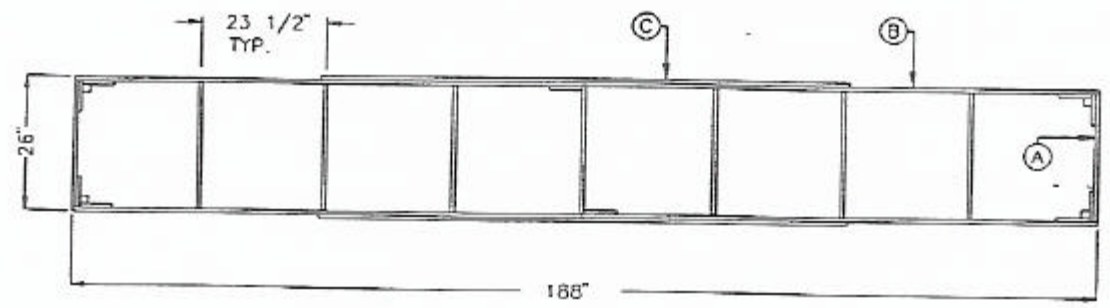
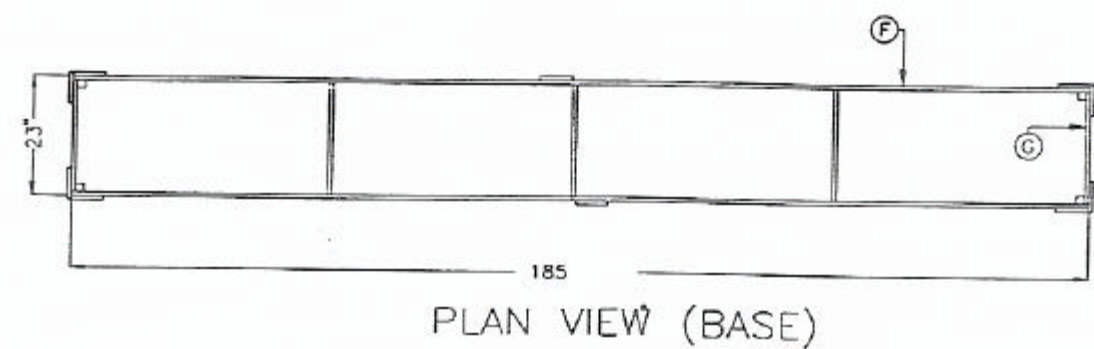
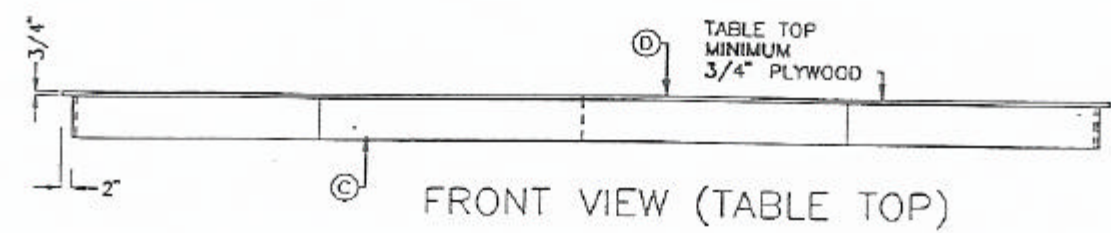
1. Cut 2 sheets of 3/4" plywood down to 30" wide.
2. Lay the sheets, end to end.
Surface should be flat and true to provide the best table surface.
3. Layout 9 pieces (A) and 4 pieces (B) as shown in Top plan view.
There should be a 2" offset from the edge of plywood to the face of the top frame assembly (pieces (A) and pieces (B)).
4. Assemble end piece (A) and leg pieces (E) with 2x2 corner piece.
Glue and screw as shown in figure 1.
5. Glue and screw pieces (B) to pieces (A) as shown in figure 2.
6. Install intermediate support table legs as shown in Top plan view.
Secure with glue and 4 screws at each connection location.

Base Assembly:

7. Layout 5 pieces (C) and 4 pieces (F) on the flat surface.
8. Assemble pieces (F) and pieces (C) to leg pieces (E) with 2x2 corner piece.
Glue and screw as shown in figure 3.
9. Glue and screw pieces (F) to pieces (C) as shown in figure 2.
10. Turn table top assembly upside down. Put base assembly in place on blocks or scrap pieces.
Glue and install 4 screws at all connecting locations. See isometric view.

Table Surface:

11. With assembled top frame sitting on plywood sheets mark a pencil line along edges of all frame pieces. Lift frame about 2" off plywood and hold up with temporary blocks. Lay down a bead of glue between all pencil lines, and let frame down onto plywood sheets. Clamp plywood sheets to top frame assembly.
12. Flip entire top assembly and plywood over to right side up with clamps secured in place. Snap a chalkline along centerlines of pieces (A) and pieces (B) on top side of plywood.
13. Drill, countersink and install screws at 12" o/c through plywood to all pieces (A) and pieces (B).
14. Attach stiffener pieces (D) to o/s face of pieces (B) and install a double row of screws at 12" o/c.



BILL OF MATERIALS

PART	NO. REQ'D.	SIZE of PLYWOOD PIECES
A	9	3/4" x 7 3/4" x 24 1/2"
B	4	3/4" x 7 3/4" x 94"
C	2	3/4" x 7 3/4" x 96"
D	2	3/4" x 30" x 96"
E	10	3/4" x 6" x 30"
F	4	3/4" x 6" x 92 1/2"
G	5	3/4" x 6" x 21 1/2"

• 5 SHEETS of 3/4" PLYWOOD REQ'D.